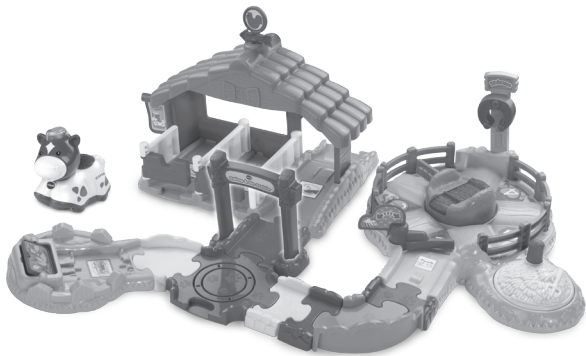


vtech[®]

User's Manual

Go! Go!  **Smart Animals**[™]
Playtime goes wild with learning![™]

Gallop & Go Stable[™]



© 2014 VTech
Printed in China
91-003023-000  

Dear Parent,

Welcome to the world of **Go! Go! Smart Animals™**! We're excited you've decided to go on an adventure with us and explore all that **Go! Go! Smart Animals™** has to offer. These toys have been designed to give your child a thrilling learning experience with hours of fun.

Go! Go! Smart Animals™ features a collection of animals that interact with your child by lighting up and playing music and sounds while teaching your child letters and animal names*. But that's only the beginning of the learning excitement! When your child interacts with our innovative **SmartPoint®** technology, they will love hearing the animals respond to each **SmartPoint®** location on **Go! Go! Smart Animals™** and **Go! Go! Smart Wheels®** playsets* with different phrases, cheerful melodies, sing-along songs or sound effects.

Additionally, our **Go! Go! Smart Animals™** playsets include tracks that can be arranged in endless ways and can be connected to other playsets including **Go! Go! Smart Wheels®** to stimulate your child's creativity. The playsets also feature buttons, gears and other manipulative elements to encourage the development of your child's fine motor skills.

With **Go! Go! Smart Animals™**, playtime goes wild with learning!

Sincerely,
Your friends at **VTech®**

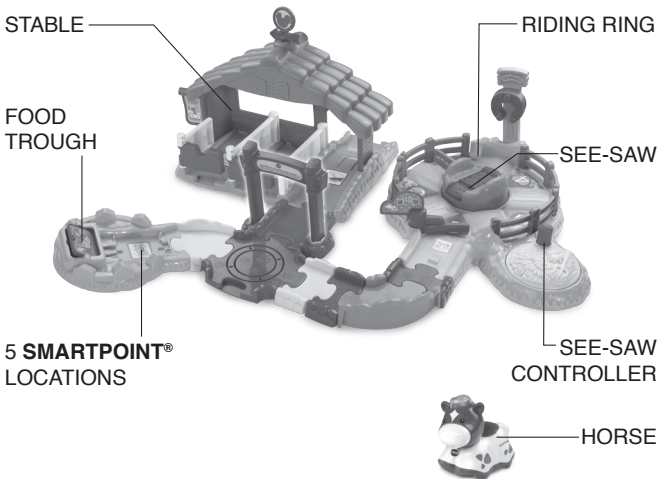
To learn more about **VTech®** toys, visit www.vtechkids.com

*Each sold separately.

INTRODUCTION

Thank you for purchasing the **VTech® Go! Go! Smart Animals™ Gallop & Go Stable™!**

Race and train your horse at the **Go! Go! Smart Animals™ Gallop & Go Stable™** by **VTech®**. Learn about horses, colors and more with the helpful **SmartPoint®** horse. Move the horse around the riding ring or place her on the see-saw in the middle to watch her move up and down. Then, feed her from the trough and put her to bed in the stable. For added fun, connect this playset to other **Go! Go! Smart Animals™** and **Go! Go! Smart Wheels®** playsets (each sold separately).



INCLUDED IN THIS PACKAGE

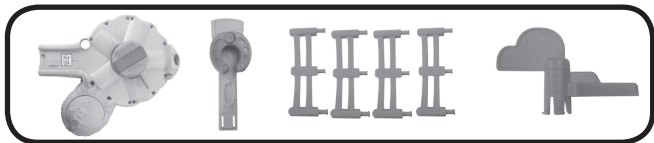
- One user's manual
- One sheet of labels



- One VTech® Go! Go! Smart Animals™ horse
- One stable base with three SmartPoint® locations
- One stable roof



- One stable back wall
- One spinning weather vane
- One SmartPoint® food trough piece



- One riding ring with one SmartPoint® location
- One horseshoe accessory
- Four riding ring fences
- One swinging gate



- Two straight stable fences with gates
- One straight stable fence
- One short straight track



- One arch
- One straight track
- Two male/female connector tracks
- One female connector track



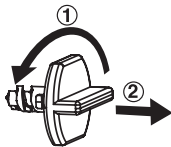
- One 90-degree track
- One 60-degree track
- One cross track

WARNING: All packing materials, such as tape, plastic sheets, packaging locks and tags are not part of this toy, and should be discarded for your child's safety.

ATTENTION : Pour la sécurité de votre enfant, débarrassez-vous de tous les produits d'emballage tels que rubans adhésifs, feuilles de plastique, attaches et étiquettes. Ils ne font pas partie du jouet.

NOTE: Please keep user's manual as it contains important information.

Unlock the packaging locks:

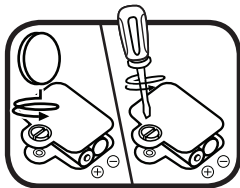


- ① Turn the packaging lock counter-clockwise several times.
- ② Pull out and discard the packaging lock.

GETTING STARTED

BATTERY INSTALLATION - Horse

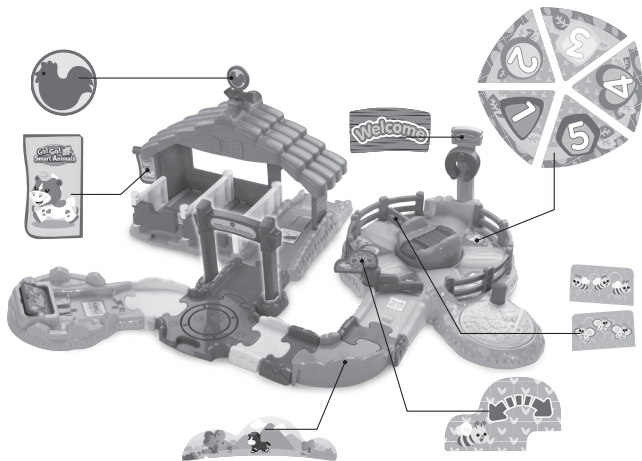
1. Make sure the unit is turned **OFF**.
2. Locate the battery cover on the bottom of the horse. Use a coin or a screwdriver to loosen the screw.
3. Install 2 new 'AAA' (AM-4/LR03) batteries following the diagram inside the battery box. (The use of new alkaline batteries is recommended for maximum performance.)
4. Replace the battery cover and tighten the screw to secure the battery cover.



BATTERY NOTICE

- Use new alkaline batteries for maximum performance.
- Use only batteries of the same or equivalent type as recommended.
- Do not mix different types of batteries: alkaline, standard (carbon-zinc) or rechargeable (Ni-Cd, Ni-M horse H), or new and used batteries.
- Do not use damaged batteries.
- Insert batteries with the correct polarity.
- Do not short-circuit the battery terminals.
- Remove exhausted batteries from the toy.
- Remove batteries during long periods of non-use.
- Do not dispose of batteries in fire.
- Do not charge non-rechargeable batteries.
- Remove rechargeable batteries from the toy before charging (if removable).
- Rechargeable batteries are only to be charged under adult supervision.

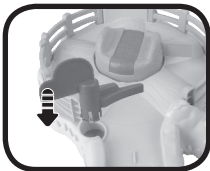
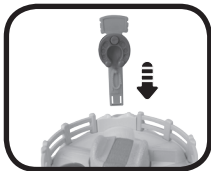
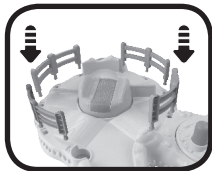
Please adhere the labels to the playset securely as indicated below:



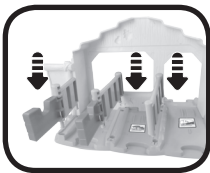
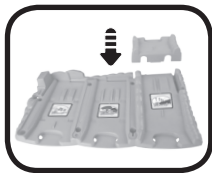
ASSEMBLY INSTRUCTIONS

With the VTech® Go! Go! Smart Animals™ Gallop & Go Stable™, safety comes first. To ensure your child's safety, adult assembly is required.

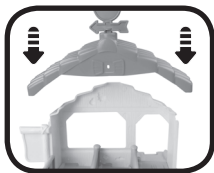
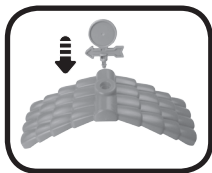
1. Insert the four riding ring fences into the holes around the riding ring. Insert the horseshoe accessory into the corresponding hole at the back of the riding ring. Insert the swinging gate into the corresponding hole of the riding ring. You will hear a click sound to indicate the accessories are secure.



2. Connect the short straight track to the stable base, then put the back wall of the stable into its position on the stable base. Insert the three straight fences into the stable base. You will hear a click sound to indicate the stable pieces are secure.



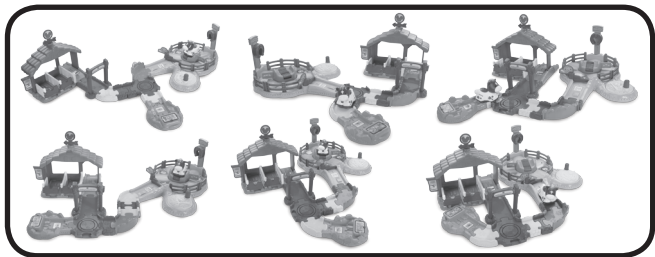
3. Insert the spinning weather vane into the roof of the stable, then put the roof onto the stable. You will hear a click sound to indicate the roof is secure.



4. Insert the arch into corresponding holes of the straight track. You will hear a click sound to indicate the arch is secure.



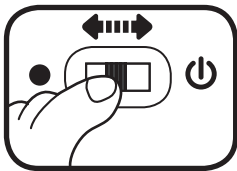
After the previous steps, connect the riding ring and stable to the included track pieces. You can configure them into different arrangements.



PRODUCT FEATURES - HORSE

1. ON/OFF SWITCH

To turn the unit **ON**, slide the **ON/OFF SWITCH** to the **ON** (⏻) position. To turn the unit **OFF**, slide the **ON/OFF SWITCH** to the **OFF** (●) position.

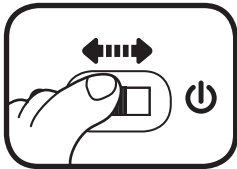


2. AUTOMATIC SHUT-OFF

To preserve battery life, the **VTech® Go! Go! Smart Animals™** horse will automatically power-down after approximately 60 seconds without input. The unit only can be turned on again by pressing the light-up button or pushing the horse quickly.

ACTIVITIES - HORSE

1. Slide the **ON/OFF SWITCH** to the **ON** position to turn the unit on. You will hear horse sounds, a song and a phrase. The light will flash with the sound.



2. Press the **LIGHT-UP BUTTON** to hear fun sounds, sing-along songs and phrases. The light will flash with the sounds.



3. Push the horse to hear fun sounds and melodies. While a melody is playing, push the horse again to add in fun sounds on top of the melody. The light will flash with the sounds.



4. For added fun, the horse interacts with **VTech® Go! Go! Smart Animals™** playsets (each sold separately). Simply roll the horse over one of the playset's **SmartPoint®** locations to see the light flash and to hear greetings, fun sounds, short tunes and sing-along songs. You can also play with your animal on **Go! Go! Smart Wheels®** playsets (each sold separately).

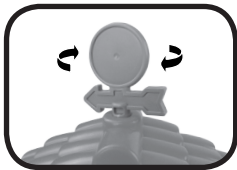


ACTIVITIES - PLAYSET

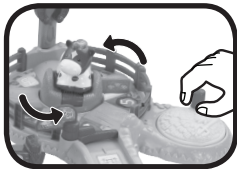
1. Roll the **SmartPoint®** horse over the playset's five **SmartPoint®** locations to trigger fun sounds, phrases and sing-along songs.
2. Flip the food trough to change between apples and corn.



3. Spin the weather vane to hear a clicking sound.



4. Turn the see-saw controller to spin the see-saw around.



CARE & MAINTENANCE

1. Keep the unit clean by wiping it with a slightly damp cloth.
2. Keep the unit out of direct sunlight and away from any direct heat.
3. Remove the batteries when the unit will not be in use for an extended period of time.
4. Do not drop the unit on hard surfaces and do not expose the unit to moisture or water.

TROUBLESHOOTING

If for some reason the program/activity stops working or malfunctions, please follow these steps:

1. Please turn the unit **OFF**.
2. Interrupt the power supply by removing the batteries.
3. Let the unit stand for a few minutes, then replace the batteries.
4. Turn the unit **ON**. The unit should now be ready to play again.
5. If the product still does not work, replace with a new set of batteries.

If the problem persists, please call our Consumer Services Department at 1-800-521-2010 in the U.S. or 1-877-352-8697 in Canada, and a service representative will be happy to help you.

For information on this product's warranty, please call **VTech**[®] at 1-800-521-2010 in the U.S. or 1-877-352-8697 in Canada.

IMPORTANT NOTE:

Creating and developing Infant Learning products is accompanied by a responsibility that we at **VTech**[®] take very seriously. We make every effort to ensure the accuracy of the information which forms the value of our products. However, errors sometimes can occur. It is important for you to know that we stand behind our products and encourage you to call our Consumer Services Department at 1-800-521-2010 in the U.S. or 1-877-352-8697 in Canada with any problems and/or suggestions that you might have. A service representative will be happy to help you.

NOTE:

This equipment has been tested and found to comply with the limits for a Class B digital device, pursuant to Part 15 of the FCC Rules. These limits are designed to provide reasonable protection against harmful interference in a residential installation. This equipment generates, uses and can radiate radio frequency energy and, if not installed and used in accordance with the instructions, may cause harmful interference to radio communications. However, there is no guarantee that interference will not occur in a particular installation. If this equipment does cause harmful interference to radio or television reception, which can be determined by turning the equipment off and on, the user is encouraged to try to correct the interference by one or more of the following measures:

- Reorient or relocate the receiving antenna.
- Increase the separation between the equipment and receiver.
- Connect the equipment into an outlet on a circuit different from that to which the receiver is connected.
- Consult the dealer or an experienced radio/TV technician for help.

THIS DEVICE COMPLIES WITH PART 15 OF THE FCC RULES. OPERATION IS SUBJECT TO THE FOLLOWING TWO CONDITIONS: (1) THIS DEVICE MAY NOT CAUSE HARMFUL INTERFERENCE, AND (2) THIS DEVICE MUST ACCEPT ANY INTERFERENCE RECEIVED, INCLUDING INTERFERENCE THAT MAY CAUSE UNDESIRE OPERATION.

CAN ICES-3 (B)/NMB-3(B)

Caution: Changes or modifications not expressly approved by the party responsible for compliance could void the user's authority to operate the equipment.



PRODUCT WARRANTY

This Warranty is applicable only to the original purchaser, is non-transferable and applies only to "VTech" products or parts. This product is covered by a 3-month Warranty from the original purchase date, under normal use and service, against defective workmanship and materials. This Warranty does not apply to (a) consumable parts, such as batteries; (b) cosmetic damage, including but not limited to scratches and dents; (c) damage caused by use with non-VTech products; (d) damage caused by accident, misuse, unreasonable use, immersion in water, neglect, abuse, battery leakage, or improper installation, improper service, or other external causes; (e) damage caused by operating the product outside the permitted or intended uses described by VTech in the owner's manual; (f) a product or part that has been modified (g) defects caused by normal wear and tear or otherwise due to the normal aging of the product; or (h) if any VTech serial number has been removed or defaced.

Prior to returning a product for any reason, please notify the VTech Consumer Services Department, by sending an email to vtechkids@vtechkids.com or calling 1-800-521-2010. If the service representative is unable to resolve the issue, you will be provided instructions on how to return the product and have it replaced under Warranty. Return of the product under Warranty must adhere to the following rules:

If VTech believes that there may be a defect in the materials or workmanship of the product and can confirm the purchase data and location of the product, we will at our discretion replace the product with a new unit or product of comparable value. A replacement product or parts assumes the remaining Warranty of the original product or 30 days from the date of replacement, whichever provides longer coverage.

THIS WARRANTY AND THE REMEDIES SET FORTH ABOVE ARE EXCLUSIVE AND IN LIEU OF ALL OTHER WARRANTIES, REMEDIES AND CONDITIONS, WHETHER ORAL, WRITTEN, STATUTORY, EXPRESS OR IMPLIED. IF VTECH CANNOT LAWFULLY DISCLAIM STATUTORY OR IMPLIED WARRANTIES THEN TO THE EXTENT PERMITTED BY LAW, ALL SUCH WARRANTIES SHALL BE LIMITED TO THE DURATION OF THE EXPRESS WARRANTY AND TO THE REPLACEMENT SERVICE AS DETERMINED BY VTECH IN ITS SOLE DISCRETION.

To the extent permitted by law, VTech will not be responsible for direct, special, incidental or consequential damages resulting from any breach of Warranty.

This Warranty is not intended to persons or entities outside the United States of America. Any disputes resulting from this Warranty shall be subject to the final and conclusive determination of VTech.